

AppliManager™

Manages the performance and availability
of operational applications

PRODUCT DATASHEET

An integrated solution for proactive application monitoring, AppliManager allows you to effectively respond to the need for monitoring and improvement of services rendered. AppliManager directly measures the end-user's experience, transferring the data collected to a database in real-time, and thus establishing a functional history of the application's operation. AppliManager identifies and anticipates incidents in business-critical applications before they affect service quality.

Overview

AppliManager tracks the application from end-to-end and follows the totality of its operations at both the hardware and the software level.

Thanks to its open architecture, AppliManager can operate autonomously or through a connection to third-party infrastructure administration software such as Tivoli, HP Openview, BMC Patrol, Nagios, etc, and also helpdesk tools and incident management tools.

AppliManager feeds essential and pertinent information on the operation of business-critical applications into your Information System governance dashboards

Technologies and Interfaces Addressed

Types of applications supported:

- .Net / J2EE / PHP / ASP / AJAX / Air-Flex / Silverlight / Webservices
- Siebel / SAP / Oracle e-business / PeopleSoft / JD Edwards / HRAccess / Hyperion
- Citrix / TSE / Client-Server
- IBM Mainframe / AS400 / Z-OS / Bull

Interfaces:

WMI, Perfmon, Telnet, SSH, SQL, SHELL, LDAP, Log, VB, Ping, SNMP, TCP, Mail, IBM 3270, IBM 5250

AppliManager brings you a single product that integrates all of the functions needed to supervise your applications:

- Creation and execution of automatic user scenarios, specially adapted for web applications, Citrix, Windows clients, 3270 and 5250 emulation
- Multi level, personalisable fusion of infrastructure
- Management of SLA-critical processes
- Consideration of calendars for the time and constraints of coverage measures

A single console, real-time dashboard showing the operation of your applications, with multiple perspectives:

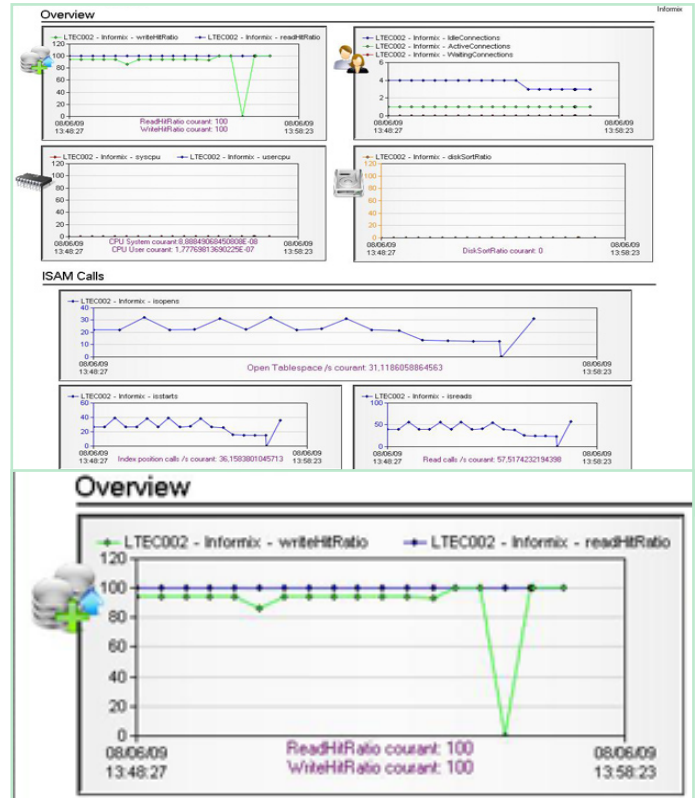
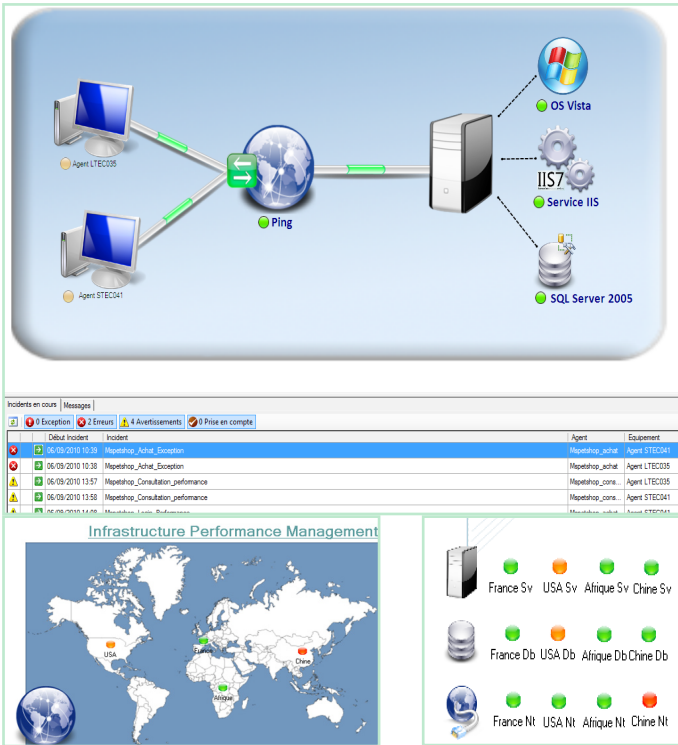
- Information system map of the local, national, or even international level
- Technical chain link
- Drill-down navigation display

Tools to prevent service deterioration:

- Real-time overview of functional network metrics
- Detection of the incidents where pre-set thresholds are exceeded
- Intelligent system alerts on application availability or potential degradation of performance
- Specifically adapted to the firm's environment
- Corrective actions automatically set off following an incident
- Measurement of user-perceived slowdown and correlation with incidents at network and the application's base technical level.
- Simulated real-user transactions carried out on a frequent basis from various geographic locations world-wide (headquarters, subsidiaries, branch offices, external network etc).
- Consolidation of steps taken with end-to-end diagnosis

Complete reporting to monitor your SLAs

AppliManager records all data collected regarding the real-time operation of your applications and saves this in a database. This the administrator retains a record of the service provided to users as well as on the operation of every sensitive hardware or software element. You can also retain incident-related data such as periodicity, geographic origin, the application in question, as well as parameters such as equipment used. The database produced is furthermore freely accessible to work with external reporting tools.



Real-time dashboard of the functional state of your applications

Recording of DBMS statistics in real time

The Benefits of AppliManager

AppliManager offers you the visibility and control that you need to effectively manage the performance and availability of your critical applications.

Is the service rendered to users of business-critical applications conforming to your SLAs? Does their availability and response time correspond to the expectations of your users? AppliManager responds to the need to manager in-operation applications running on infrastructures that have be

For more information

Tel : +44(0) 207 484 6270
 Tel : +33(0) 1 49 04 70 00
 Email : info@quotium.com
 Web : www.quotium.com

Quotium Technologies is a software vendor that develops innovative solutions to address the security, availability, and performance of applications from the development phase through to production as well as the data security and availability needs of corporate archives.

Quotium's software products, including Seeker, Qtest and AppliManager, provide a complete solution to clients, guaranteeing the continued operation of user applications which are at the heart of many companies' activities. With StorSentry, Quotium Technologies addresses the data security and availability needs of corporate archives.

The company utilizes its highly potent technologies to address the needs of a highly international client base, comprising medium sized and multi-national enterprises across all business sectors.